

PLASTIC RECYCLING MACHINERY



Fosita
富顺达

PLASTIC PIPE PROCESSING MACHINERY
PVC PIPE MAKING MACHINE
PROFILE MAKING MACHINE

fosita@cnfosita.com

苏州富顺达科技有限公司
SUZHOU FOSITA SCIENCE AND TECHNOLOGY CO., LTD



苏州富顺达科技有限公司
SUZHOU FOSITA SCIENCE AND TECHNOLOGY CO., LTD.

地址: 江苏省张家港市乐余镇永利工业园
Add: Yong Li Industrial Zone, Leyu Town, Zhangjiagang City, Jiangsu Province, China
电话 (Tel): 0086-512-58661008 0086-512-58663008
传真 (Fax): 0086-512-58961141

Http://www.cnfosita.com E-mail:fosita@cnfosita.com
Mobile: 00 86 13506228656

注: 本册所有图片、文字、参数仅供参考, 如有变更恕不另行通知。产品请以实际为准。请翻过公司网站查看详情。
Remark: All pictures, explanation and parameters in this booklet are for reference only kindly please see actual sample of end products. Final explanation right is held by Fosita.

Fosita
富顺达

ABOUT US

Suzhou Fosita Science and Technology Co., is located in Zhangjiagang City Jiangsu Province, the economic booming area of Changjiang Delta.

Suzhou Fosita is a modernized enterprise, specialized in research, development, manufacture and sales. The main products are PE/PPR/PVC pipe production lines, WPC/PVC profile production lines, PET bottles and PP/PE films recycling line, Plastic wastes pelletizing lines, and all kinds of other auxiliary equipments, such as Mixer, Crusher, Pulverizer, Shredder, Water Chiller and so on. It is equipped with advanced manufacturing and processing equipments, strict products inspection systems, technical staff with abundant experience, and professional international trade sales staff. Our products, which have passed CE certificate, are exported to many countries, such as Brazil, Libya, Egypt, Qatar, Syria, UAE, Jordan, Turkey, Armenia, Nepal, Uzbekistan and so on. We also have our sales agency in Egypt and Jordan.

In 2012, we set up a new company, Suzhou Fosita Imp&Exp Co., Ltd. It mainly deals with international trading, helping the foreign customers to search the products in domestic market and send out.

Our business ideology is "Our quality is measured by professional level". All the Fosita people will give full play to this business ideology by strenuous efforts, making all the customers enjoy complete set of solving scheme and professional service of plastic manufacturing equipments. Besides, the comfortable, distinguished life will accompany you all the way!

FACTORY

OFFICE CORNER

FACTORY

● FACTORY



● OFFICE CORNER



● FACTORY



荣誉证书
HONORS AND QUALIFICATIONS



六位一体解决方案
SIX IN ONE SOLUTION

01 顾客需求 CUSTOMER NEED

准确了解您的需求，为您及时、经济私人定制
Provide machine specially and economically by your request

02 研发能力 RESEARCH

自有专业的研发团队和多位机械行业科研人员
Equipped with developed technical team and professional mechanical engineer staffs.

03 品质保障 QUALITY

拥有多台精密仪器和操作人员，为产品质量提供品质保障
Own high precise equipment and experienced operator for high quality product guarantee

04 产品多样 PRODUCTION LINE

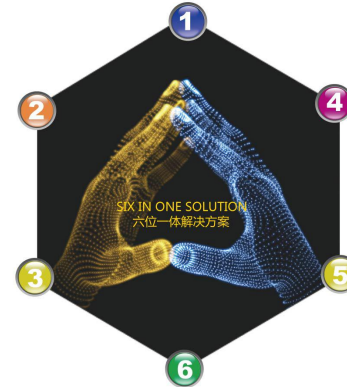
目前有多条生产线，客户可根据需求选择，设备选择多样性
Have variety of production lines and designs for your choice

05 产品类别 PRODUCT CATEGORY

主要产品有塑料管材生产线，塑料型材生产线，塑料清洗回收造粒生产线和各类辅机
Main product: plastic pipe/profile production line, plastic recycling and granulating machine and plastic auxiliary machine

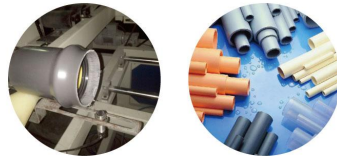
06 包装方案 PACKING SOLUTION

为客户提供整套设备方案，方便客户管理运行
Offer the complete machine solution for customer and easy for operation and management



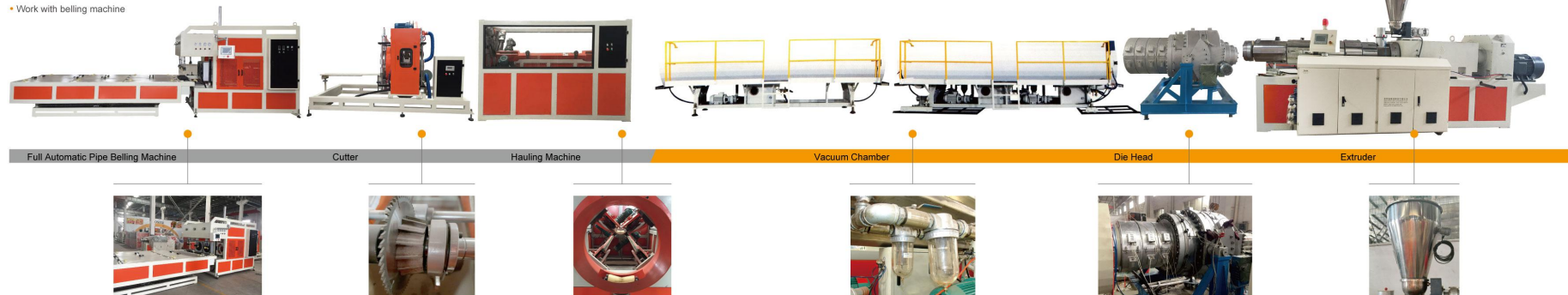
用专业的眼光衡量我们的品质
Our Quality Is Measured By Professional Level

PVC PIPE PRODUCTION LINE
PVC管材生产线



PRODUCT ADVANTAGE

- Extruder with high capacity
- Customized die head design
- Vacuum tank with Battlefield design and Kabra technology
- Planetary cutting with chamfering
- Work with belling machine



Fosita 富顺达 苏州富顺达科技有限公司
SUZHOU FOSITA SCIENCE AND TECHNOLOGY CO.,LTD.

TECHNICAL PARAMETER

Pipe Line Model	Diameter Range(mm)	Extruder Model	Line Length(m)
FST-63	Φ16-Φ63	SJSZ-51/105	24
FST-110	Φ20-Φ110	SJSZ-55/110	25
FST-260	Φ50-Φ250	SJSZ-65/132	25
FST-315	Φ110-Φ315	SJSZ-80/156	25
FST-630	Φ15-Φ630	SJSZ-92/188	32
FST-800	Φ500-Φ800	SJSZ-105/218	33

PVC DOUBLE PIPE PRODUCTION LINE

PVC双管生产线

PRODUCT ADVANTAGE

- Machine with stable production speed and independent control
- Die head with hard chroming surface for durable
- Clean cut with no scraps



TECHNICAL PARAMETER

Pipe Line Model	Diameter Range(mm)	Extruder Model	Main Motor Power(kw)	Machine Speed (m/min)	Output(kg/h)
FST-63	Φ16-Φ63	SJSZ-62/132	AC37	15	250
FST-110	Φ20-Φ110	SJSZ-80/156	AC55	4	360

03

PVC FOUR PIPE PRODUCTION LINE

PVC一出四管材挤出生产线

PRODUCT ADVANTAGE

- Produce four pipes at one time in high efficiency
- Independent production/control to avoid interference
- Stable speed with four different sizes as customer request
- Swarfless cutting with no scraps/equipped with winder or stacker



TECHNICAL PARAMETER

Pipe Line Model	Diameter Range(mm)	Extruder Model	Main Motor Power(kw)	Machine Speed (m/min)	Output(kg/h)
FST-32	Φ16-Φ63	SJSZ-62/132	AC37	1-15	270

04

用专业的眼光衡量我们的品质

Our Quality Is Measured By Professional Level

HDPE PIPE EXTRUSION LINE

HDPE 管材生产线

PRODUCT ADVANTAGE

- Provide solution for multi-layer pipe
- Unique design of multi-layer die head to offer economic material cost plan
- Good auxiliary machine to equip with the production speed
- Improve screw with excellent plasticization performance and high capacity
- High efficiency die head quality with good effect of vacuum tank
- Stable haul off speed with clean cut



05

Fosita

富顺达

苏州富顺达科技有限公司

SUZHOU FOSITA SCIENCE AND TECHNOLOGY CO.,LTD.



TECHNICAL PARAMETER

Pipe range (mm)	20-63	50-110	75-250	90-315	160-450	315-630	400-800	710-1200	1000-1600
Extruder model	65/33	65/33	75/33	75/33	90/33	120/33	150/33	120/33 90/33	120/33
Extruder powder (kw)	37	55	110	132	160	280	355	280 160	280
Max. output (kg/h)	120	180	330	380	450	750	900	1200	1500

06

用专业的眼光衡量我们的品质
Our Quality Is Measured By Professional Level

PPR/PERT HIGH SPEED PIPE PRODUCTION LINE

PPR/PERT 高速管材挤出生产线

PRODUCT ADVANTAGE

- Improve screw with excellent plasticization performance and high capacity
- High efficiency die head quality with good effect of vacuum tank
- Stable haul off speed with clean out



07



TECHNICAL PARAMETER

Pipe Line Model	Diameter Range(mm)	Extruder Model	Output(kg/h)	Machine Speed (r/min)	Total Installed Power(kw)
FST-63	Φ16-Φ63	SJ-65/33	180	3-15	70
FST-110	Φ20-Φ110	SJ-75/33	250	3-12	120
FST-160	Φ75-Φ160	SJ-75/33	350	2-10	160
FST-250	Φ50-Φ250	SJ-90/30	450	2-6	200
FST-315	Φ110-Φ315	SJ-90/33	500	1.5-4	250
FST-400	Φ160-Φ400	SJ-90/33	550	1-3	280
FST-500	Φ200-Φ500	SJ-100/33	700	1-2.5	300
FST-630	Φ250-Φ630	SJ-120/33	800	0.5-2	400
FST-800	Φ400-Φ800	SJ-120/33	1200	0.5-1	500
FST-1200	Φ800-Φ1200	SJ-150/33	1500	0.5-0.8	650

08

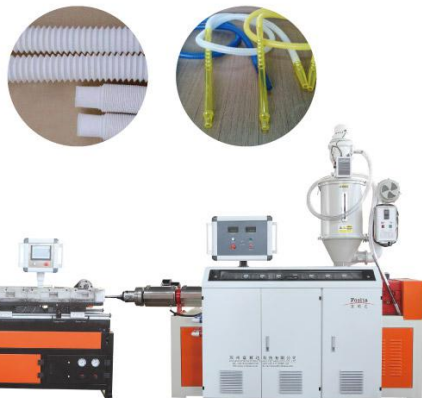
用专业的眼光衡量我们的品质
Our Quality Is Measured By Professional Level

SINGLE WALL CORRUGATED PIPE PRODUCTION LINE

单壁波纹管生产线（高速）

PRODUCT ADVANTAGE

- Gear rack design with good performance of corrugator machine
- Mold block with durable and wear-resistant, also suitable for medical use
- Max. speed can be 40m/min by Fosita design
- All line is equipped with Siemens PLC



TECHNICAL PARAMETER

Pipe Line Model	Diameter Range(mm)	Extruder Model	Max Output(kg/h)	Max Machine Speed (m/min)	Main Motor Power(kw)	Line Length(m)
FST-16	Φ5-Φ16	SJ45	50	25	22	10
FST-50	Φ16-Φ50	SJ85	100	25	37	10

09

SINGLE WALL CORRUGATED PIPE PRODUCTION LINE

单壁波纹管生产线（低速）

PRODUCT ADVANTAGE

- Pipe is forming by air cooling
- Economic corrugated pipe machine for new user
- Quiet production and speed reach 8-10m/min
- Equip with high precise cutter for auto use



TECHNICAL PARAMETER

Pipe Line Model	Diameter Range(mm)	Extruder Model	Max Output(kg/h)	Max Machine Speed (m/min)	Main Motor Power(kw)	Line Length(m)
FST-16	Φ7-Φ16	SJ45	50	10	22	10
FST-50	Φ16-Φ50	SJ85	100	10	37	10

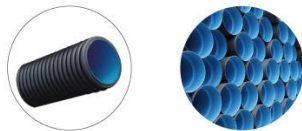
10

BW-11 DOUBLE-WALL CORRUGATED PIPE PRODUCTION LINE

BW-11型双壁波纹管生产线

PRODUCT ADVANTAGE

- Economical machine model to produce good quality pipe with stable speed
- Pipe is vacuum forming with good cooling effect
- Mold block is with nitriding process to make durable and anti-abrasion
- Swallow cutter precisely control cutting position



TECHNICAL PARAMETER

Pipe Line Model	Diameter Range(mm)	Extruder Model	Max Output(kg/h)	Max Machine Speed (r/min)	Main Motor Power(kw)
FST-80	Φ50-Φ60	SJ45/30-SJ65/30	100-120	3-15	75
FST-160	Φ63-Φ160	SJ55/33-SJ65/33	180-220	3-12	90
FST-200	Φ110-Φ200	SJ65/30-SJ65/33	250-350	2-8	110
FST-800	Φ500-Φ800	SJ75/33-SJ90/33	400-650	0-4	185

11

PVC SPIRAL HOSE PRODUCTION LINE

PVC塑筋螺旋管生产线

PRODUCT ADVANTAGE

- Extruder with two sets for rigid and soft layer
- Simplified structure and easy operation
- Final pipe quality with anti-corrosion and anti-abrasion



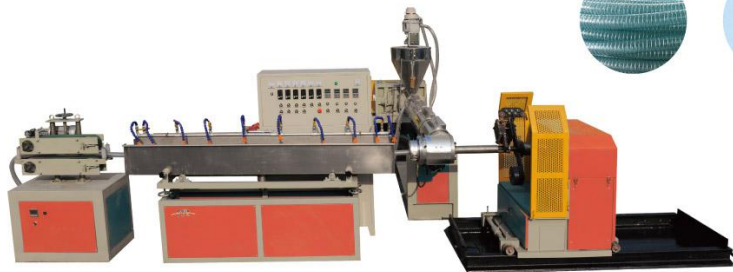
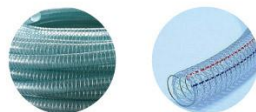
TECHNICAL PARAMETER

Pipe Line Model	Diameter Range(mm)	Extruder Model	Max Output(kg/h)	Main Motor Power(kw)	Line Length(m)
FST-50	Φ16-Φ50	SJ45	50	22	10
FST-100	Φ63-Φ110	SJ65	100	30	20
FST-200	Φ50-Φ200	SJ65	100	37	30

12

PVC STEEL REINFORCED HOSE PRODUCTION LINE

PVC钢丝增强软管生产线



TECHNICAL PARAMETER

Model	HDSW45	HDSW65	HDSW90	HDSW120
Extruder	SJ45/30	SJ65/30	SJ90/30	SJ120/30
Diameter Range(mm)	Φ12-Φ25	Φ20-Φ50	Φ50-Φ102	Φ75-Φ150
Output(kg/h)	20-40	40-75	70-130	100-150
Installed Power(kw)	30	40	50	75

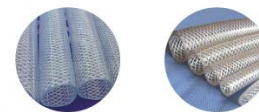
13

PVC FIBER REINFORCED HOSE PRODUCTION LINE

PVC纤维增强软管生产线

PRODUCT ADVANTAGE

- New technology to make good pipe quality
- Produce high transparent with fiber inside pipe
- Wide application for water, garden and gas etc



TECHNICAL PARAMETER

Pipe Line Model	Diameter Range(mm)	Extruder Model	Max Output(kg/h)	Main Motor Power(kw)	Line Length(m)
FST-50	Φ20-Φ50	SJ65	100	30	25
FST-100	Φ50-Φ160	SJ75	150	37	25

14

OVERLAP WELDING PLASTIC-ALUMINIUM-PLASTIC COMPOUND PIPE PRODUCTION LINE

铝塑复合管生产线（搭接）

PRODUCT ADVANTAGE

- Specially designed technique for stable and high quality extrusion
- Good ultrasonic welding machine guarantee stable performance and perfect welding quality
- Equipped with aluminum sheet feeding device to ensure continuous and stable production
- Double winder with automatic winding displacement, tension control to achieve compact and nice coils of pipe



TECHNICAL PARAMETER

Pipe Line Model	Diameter Range(mm)	Max Output(kg/h)	Main Motor Power(kw)	Line Length(m)
FST-32	Φ16-Φ32	200	150	30
FST-63	Φ32-Φ63	200	170	30

15

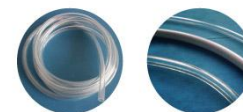
PA NYLON TUBE EXTRUSION LINE

PA尼龙管挤出生产线



MEDICAL TUBE EXTRUSION LINE

医疗软管生产线



16

DGD SERIES LABYRINTH DRIP IRRIGATION BELT PRODUCTION LINE

DGD型迷宫式滴灌带生产线

PRODUCT ADVANTAGE

- Especially for agricultural water application
- With dripper inserting system pipe solution
- High speed with PLC control for precise control



TECHNICAL PARAMETER

Pipe Line Model	Diameter Range(mm)	Extruder Model	Dripper Gap	Main Motor Power(kw)	Max Machine Speed(m/min)	Line Length(m)
FST-32	Φ16-Φ32	SJ65	Φ200-Φ600	37	20-40	30

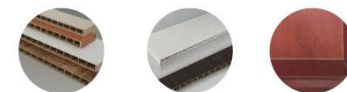
17

SERIES OF WIDE DOOR PANEL AND WINDOW BOARD PRODUCTION LINE

系列宽幅门板及窗台板生产线

PRODUCT ADVANTAGE

- Different kinds of profile design with unique precise mould to offer perfect final profile product
- Professional haul off and vacuum calibration table are designed for profile
- High capacity extruder with stable production



TECHNICAL PARAMETER

Pipe Line Model	Extruder Model	Max Width(mm)	Machine Speed (m/min)	Main Motor Power(kw)	Output(kg/h)	Line Length(m)
FST-240	SJ50/110	240	0-5	22	150	22
FST-300	SJ65/132	300	0-5	37	250	35
FST-600	SJ80/156	600	0-3	56	350	44
FST-900	SJ92/68	900	0-2.5	110	600	52
FST-1200	SJ92/188	1200	0-2.5	110	800	62

18

PS FOAM PICTURE FRAME PROFILE PRODUCTION LINE

PS发泡镜框型材生产线

PRODUCT ADVANTAGE

- Unique technology to transfer coating layer from film to foamed profile
- Change embossing wheel to produce various of profile design
- High capacity extruder to offer the stable output



TECHNICAL PARAMETER

Pipe Line Model	Extruder Model	Main Motor Power(kw)	Machine Speed (r/min)	Line Length(m)
FST-PS65	SJ65	50	2-6	27
FST-PS75	SJ75	60	2-7	28
FST-PS90	SJ90	90	1-5	33
FST-PS100	SJ100	100	1-6	34
FST-PS120	SJ120	130	1-3	35

19

PVC PLASTIC STONE LINE PRODUCTION LINE

PVC 石塑线条生产线

PRODUCT ADVANTAGE

- Use conical twin screw extruder for raw material powder
- Produce all kinds of artificial marble in hotel, decoration, restaurant etc.
- Customized design and environmental product



TECHNICAL PARAMETER

Pipe Line Model	Extruder Model	Main Motor Power(kw)	Machine Speed (r/min)	Line Length(m)
FST-65	SJSZ-65/132	37	0-6	25
FST-80	SJSZ-80/156	55	0-4	30

20

PVC ROOF TILE EXTRUSION LINE

PVC波浪瓦生产线

PRODUCT ADVANTAGE

- Anti-noisy, anti-erosion, heating resistance and water proof



TECHNICAL PARAMETER

Layer structure of roofing tile	Single layer tile	Double layer tile		Three layer tile(inner foaming)	
Extruder model	SJZ80/156	SJZ92/188	SJZ80/156+SJ50	SJZ92/188+SJ50	SJZ51/105+SJZ65/132+SJZ51/105
Width of tile	710-1220mm	710-1220mm	710-1220mm	710-1220mm	710-1220mm
Thickness of tile	0.8-3.0mm	0.8-3.0mm	2.5-3.0mm	2.5-3.0mm	2.5-3.0mm
Extrusion capacity	450-550kg/h	600-700kg/h	450-550kg/h	600-700kg/h	400-500kg/h

21

PVC+ASA/PMMA GLAZE ROOF TILE PRODUCTION LINE

PVC + ASA/ PMMA 琉璃瓦生产线

PRODUCT ADVANTAGE

- This production line is mainly used to produce PVC glaze tile which width is 720,930,1100mm,thickness is 2mm,2.5mm,3mm.
- PVC,ASA or PMMA compound roof tile production line consists of conical double screw extruder SJZ80/156, single screw co-extruder,T,die forming machines for main tile and ridge tiles, haul-off, cutter, stacker.
- Supply formula guide service and staple raw material purchase.
- Professional analyzing and design by considering production cost and product performance.



22

PVC, PE, ABC SHEET PRODUCTION LINE

PVC, PE, ABC片材生产线



PRODUCT ADVANTAGE

- The screw was designed special mixed material and high plastic so that it flux plastic,color and luster equality,output heighten.
- Clothes rath Model DIE was designed special double throttle,it adjusts thickness of sheet exactly.
- Temperature control $\pm 1^{\circ}\text{C}$, it can exactitude control the course of plastic and thickness and unknit of sheet.
- Moulding unit adopt horizontal and vertical,it provide more choice in the operate course of thick sheet, sheet metal by fluctuation at liberty and increase quality of sheet.
- Adjusting thickness of sheet by screw and oil pressure pressing wheel double direction so as to achieve thickness exactly.
- Pressing double loop cooling system, concert die temperature controller exactly control pressing wheel temperature so as to achieve unknit and thickness equality.



23

用专业的眼光衡量我们的品质
Our Quality Is Measured By Professional Level

PET FLAKE WASHING AND RECYCLING LINE

PET 瓶片清洗生产线

This line is the best proposal for PET bottles recycling ,with full system configuration including separating, label removing, crushing washing drying and paper scraps separating.
Processing capacity : 300kg/h, 500kg/h, 1000kg/h and more as per requirement by customer.



25

PET/PP PACKING STRAP EXTRUSION LINE

PET/PP打包带生产线



PET 打包带

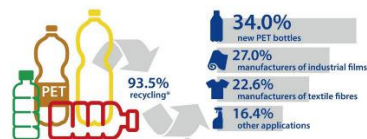
有颜色的PP打包带

透明PP

TECHNICAL PARAMETER

Pipe Line Model	Extruder Model	Main Motor Power(kw)	Output (kg/h)	Line Length(m)
FST-75	SJ75	37	80	27
FST-90	SJ90	55	100	30
FST-105	SJ105	75	150	33

24



*PET bottle recycling after removal of caps and labels
②-4% PET waste during recycling process
Data source: commissioned by Fosita PET to IRIK to calculate recycling potential of Fosita PET



TECHNICAL PARAMETER

Pipe Line Model	Total Power(kw)	Output (kg/h)	Line Length(m)
FST-300	90-120	200-300	25
FST-500	130-145	500-600	30
FST-1000	150-190	800-1000	40

26

用专业的眼光衡量我们的品质
Our Quality Is Measured By Professional Level

PP、PE FILM WASHING AND RECYCLING LINE

PP、PE 薄膜破碎清洗线

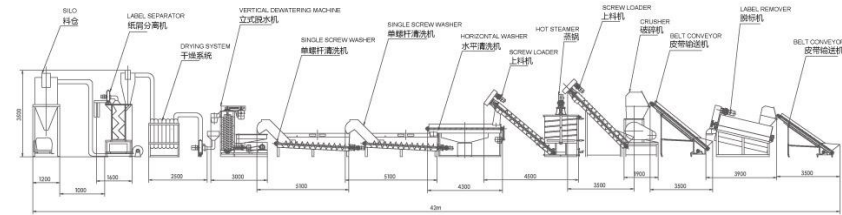


TECHNICAL PARAMETER

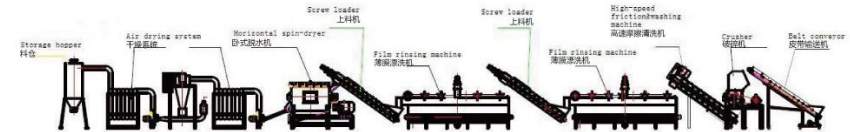
Pipe Line Model	Output (kg/h)	Total Power(kw)	Line Length(m)
FST-300	200-300	65	20
FST-500	500-600	110	25
FST-1000	800-1000	185	30

27

PET Bottle Washing Line



Plastic (900-1000kg/h) Film Washing Line



28

用专业的眼光衡量我们的品质
Our Quality Is Measured By Professional Level

PP、PE RECYCLING & GRANULATING SYSTEM(WATER-RING PELLETIZING SYSTEM)

PP、PE 回收造粒机 (水环切粒)

The extruding die face cutting granulating line is for plastics such as LDPE, HDPE, PP, recycling granulating (pelletizing).
Processing capacity:150kg/h to 500kg/h

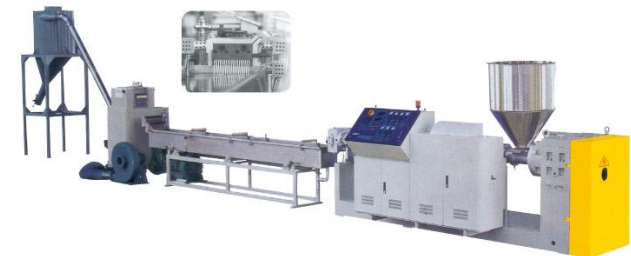


TECHNICAL PARAMETER

Pipe Line Model	Extruder Model	Output (kg/h)	Line Length(m)
FST-150	SJ100	80-150	10
pp-100

COLD-CUTTING TYPE PELLETIZING LINE

冷切拉条造粒生产线



TECHNICAL PARAMETER

Pipe Line Model	Extruder Model	Output (kg/h)	Line Length(m)
FST-150	SJ100	80-150	12
pp-100

PVC/PE/PA/PP DOUBLE RANK RECYCLING & GRANULATING SYSTEM

PVC/PE/PA/PP双阶式回收造粒机组



TECHNICAL PARAMETER

Pipe Line Model	Extruder Model	Output (kg/h)	Line Length(m)
FST-200	SJ100/100	200-250	13
FST-300	SJ120/120	300-350	20
FST-500	SJ150/150	400-500	25

31

PVC HOT-CUT PELLETIZING LINE

PVC热切造粒生产线



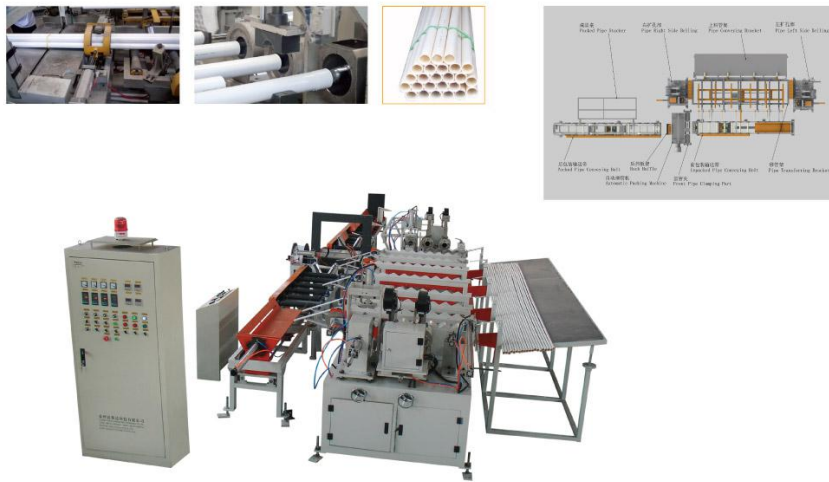
TECHNICAL PARAMETER

Pipe Line Model	Extruder Model	Main Motor Power(kw)	Output (kg/h)
FST-150	SJSZ-155/110	22	100-150
FST-250	SJSZ-65/132	37	200-250
FST-400	SJSZ-80/150	55	350-400
FST-800	SJSZ-92/188	110	650-800

32

SGK SERIES FULL-AUTOMATIC DOUBLE PIPE BELLING AND PACKING MACHINE

SGK系列双管全自动扩口打包一体机



33

HARD PLASTIC PIPE BELLING MACHINE-UNIVERSAL

塑料硬管扩口设备-通用型



TECHNICAL PARAMETER

Pipe Line Model	Pipe Diameter (mm)	Pipe Wall Thickness(mm)	Pipe length(m)	Belling Type (m/min)	Total Power (kw)	Working Pressure (Mpa)	Water Consumption (m³/h)	Output (piece/h)	Output (piece/h)
FST-150	50-160	2.9-15	4-5	R.U and Square type	6.77	4-6.3	0.4	2-40	6500X1800X1800mm
FST-250	63-250	2.9-15	4-6	R.U and Square type	8.87	4-6.3	0.4	2-40	6800X1800X1850mm
FST-315	160-315	2.9-15	4-6	R.U and Square type	12.55	4-6.3	0.4	2-35	7500X2350X2100mm
FST-500	250-500	2.9-22	4-6	R.U and Square type	15.15	4-6.3	0.4	2-30	7800X4000X2000mm
FST-630	400-630	2.9-22	4-6	R.U and Square type	16.35	4-6.3	0.4	2-30	8000X4200X2100mm

34

SRL-Z SERIES HIGH SPEED MIXER

SRL-Z系列热冷混合机组



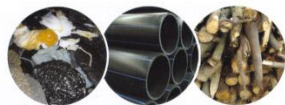
TECHNICAL PARAMETER

Model	SRL-Z100/200	SRL-Z200/500	SRL-Z300/600	SRL-Z500/1000	SRL-Z800/1600
Total volume (L)	100/200	200/500	300/600	500/1000	800/1600
Effective capacity (L)	65/130	150/320	200/360	330/640	600/1050
Rotation speed (rpm)	650/1300/2000	475/950/1300	475/950/1000	430/860/500	370/740/500
Mixing time (min)	8-12	8-12	8-12	8-15	8-15
Motor power (KW)	14/22/7.5	30/42/11	40/55/11	55/75/15	83/110/22
Overall dimension(mm)	1950×1600×1800	4580×2240×2470	4800×2640×2480	5600×3000×3100	5170×3200×4480
Weight(KG)	2200	3400	3600	6500	9600

35

SHREDDER

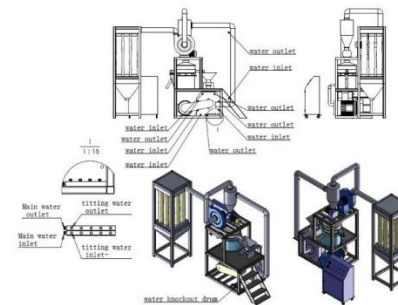
撕碎机



37

SERIES PLASTIC PULVERIZER

塑料磨粉机系列



36

PLASTIC CRUSHER

塑料破碎机系列



SWP卧式破碎机
SWP Horizontal Crusher



PC破碎机
PC Crusher



大型破碎机
Large-sized Crusher

SH SERIES PLASTIC MIXER

SH系列塑料混合机



38

VACUUM CALIBRATION TANK

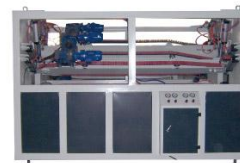
真空定径箱



39

HAUL-OFF UNIT

牵引机



八爪牵引机
TWO CATERPILLARS HAUL-OFF MACHINE



三履带牵引机
THREE CATERPILLARS HAUL-OFF MACHINE



四履带牵引机
FOUR CATERPILLARS HAUL-OFF MACHINE



气缸式牵引机
CYLINDER HYDRAULIC HAUL-OFF MACHINE



单牵引切割机
SINGLE HAUL-OFF CUTTER



双牵引切割机
DOUBLE HAUL-OFF CUTTER

40

CUTTER SERIES

切割机系列



INK PRINTER

印字机



41

OTHER AUXILIARY MACHINE

其他辅机



ZJF 系列塑料粉末上料机
ZJF PLASTIC POWDER LOADER



DTC系列螺旋上料机
DTC SERIES SPIRAL FEEDER



塑料自动加料机
AUTOMATIC LOADER



干燥机
DRYER MACHINE



团粒机
AGGLOMERATOR



冷水机组
Chille



收卷机
Winder



共挤机
Co-extruder

42

PIPE EXTRUSION MOULD
管材挤出模具



PROFILE EXTRUSION MOULD
型材挤出模具

